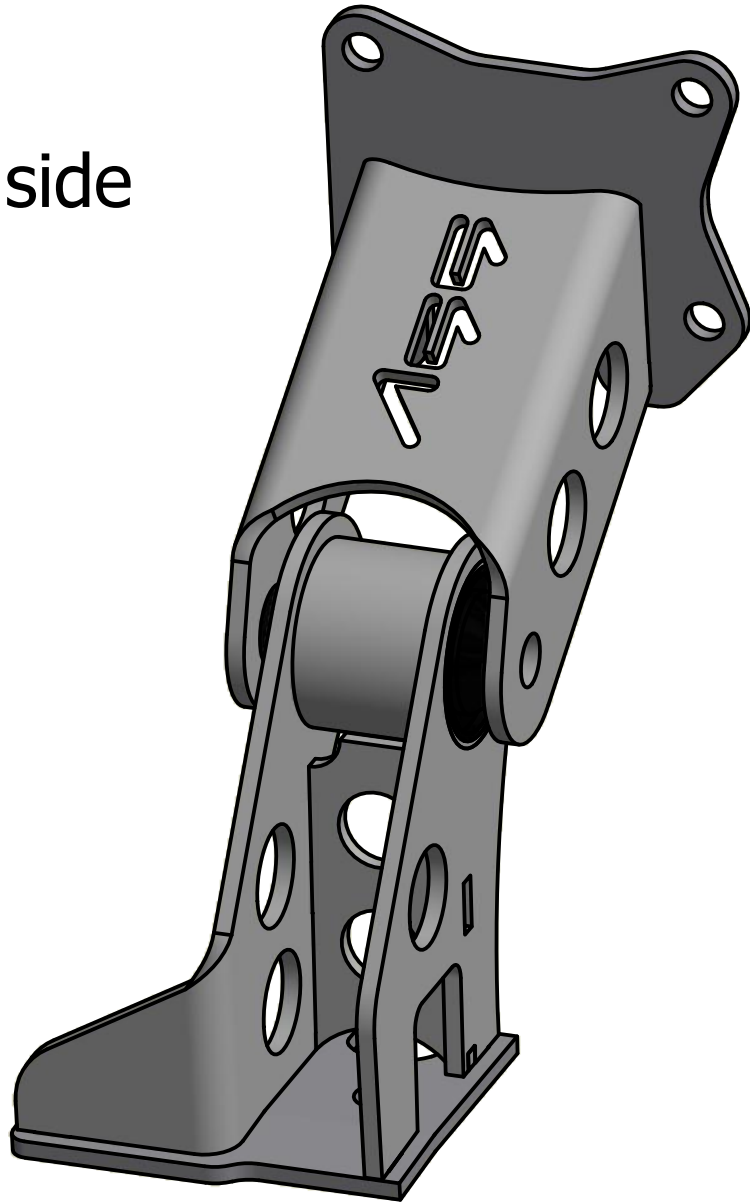
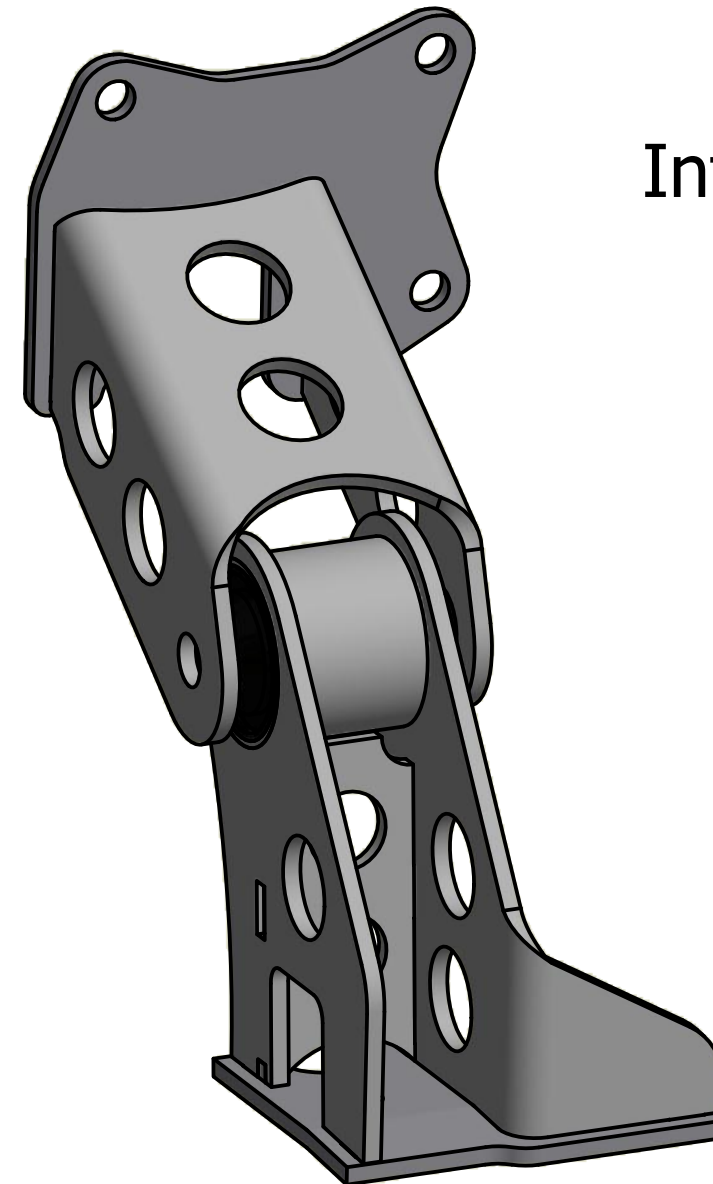


## AS-001013-01 Engine mounts BMW E46 - 1JZ / 2JZ

Exhaust side



Intake side



These mounts have a bolt section that will fit 1JZ / 2JZ GE and GTE.  
The mounts are made to fit with rear-mounted oil pan.

The front corners of the oil pan may be needed to massaged slightly  
with a hammer to create some space to the front member.

A set of mounts consists of: 4 mounts including bushings, 2 pcs M14 bolts, nuts and washers.  
2 pcs M10x20 screw, 2 pcs M10 nut to attach to the front member.  
The mounts are then screwed together with the bolt from the joint to the wishbone arm.  
Also include bolts for mounting the mounts against the motor block M10(x1.25)x20.